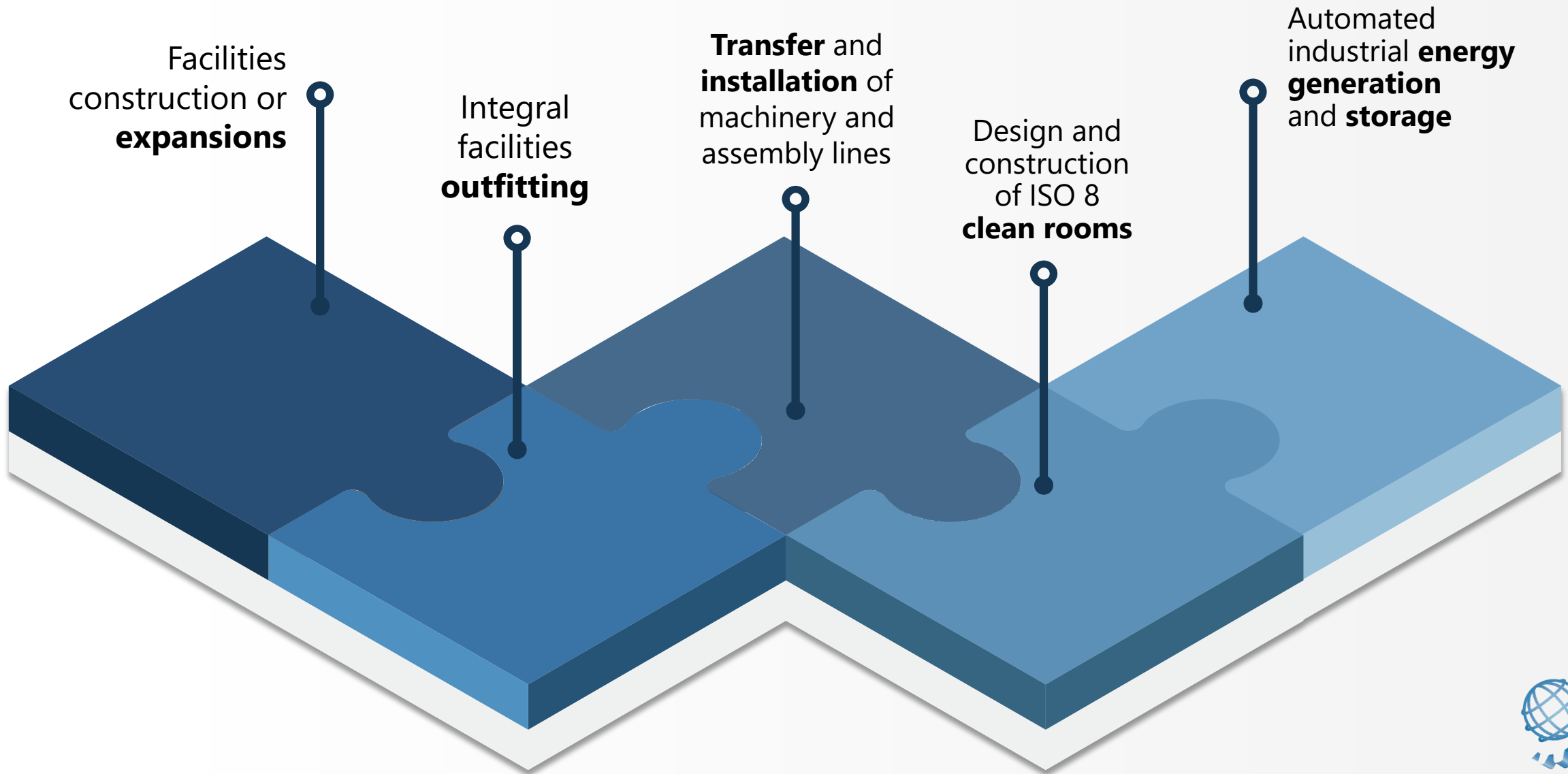




We specialize at:





ACISSA is a 100% Mexican company, that provides specialized engineering services and develops tailor made projects for its clients.

1998

Begins operations to cover the needs of the industry in relocation and installation of equipment and machinery.

2001

Extension of our specialized construction services for facilities modifications or expansions.

2005

Opening of strategic geographic offices to provide nationwide coverage.

2025

Continuous growth carrying out projects in +18 states in México and in the U.S.

Our main values



Enthusiasm
and passion in
our daily work.



Our clients are
our partners and
friends.



Perceive our
clients needs,
translating them
into results.



Serve our
clients with our
experience.



SUCCESS CASES

- CONSTRUCTION OF INDUSTRIAL BUILDINGS
- MACHINERY MOVEMENT AND INSTALLATION
- BUILDING OUTFITTING

ZF Direcciones QRO

Industrial building construction
11,600 m²

Machinery transportation
and installation



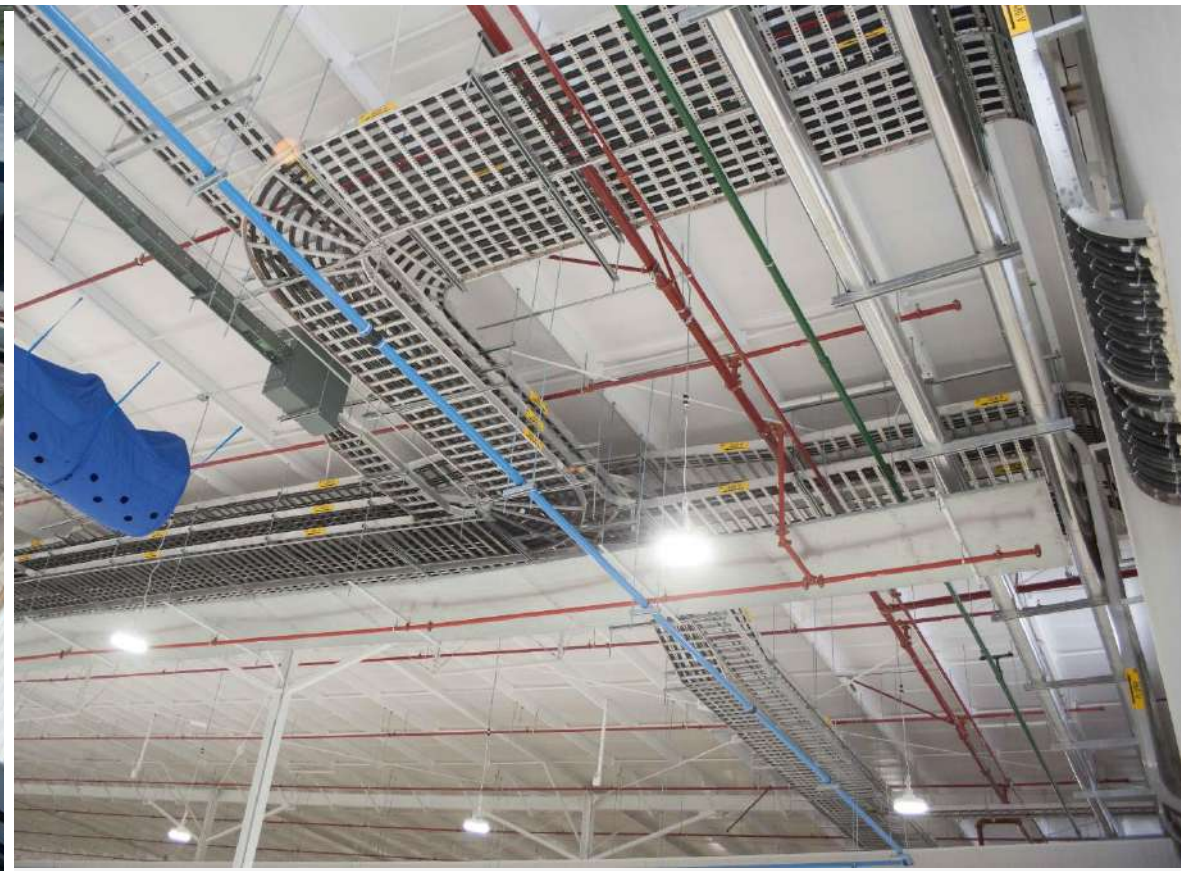
- ✓ **EXECUTIVE PROJECT DEVELOPMENT. INTEGRAL PROJECT EXECUTION**
- ✓ **OUTFITTING ALL SPECIALTIES**
- ✓ **CLEANROOM AND LABORATORY CONSTRUCTION**



ZF Direcciones QRO

Industrial building construction
11,600 m²

Machinery transportation
and installation



BRP Lab 2024

Clean room for battery manufacturing 1,866.87m²

BIM LOD 500 Project



- ✓ **EARTHWORKS, FOUNDATION, STRUCTURE**
- ✓ **FPS AND LIGHTING CONTROLLED BY BMS (BUILDING MANAGEMENT SYSTEM)**
- ✓ **ALARM SYSTEM, GAS EXTRACTION AND ELECTRICAL SYSTEM**
- ✓ **HVAC WITH SUSPENDED PARTICLES CONTROL**



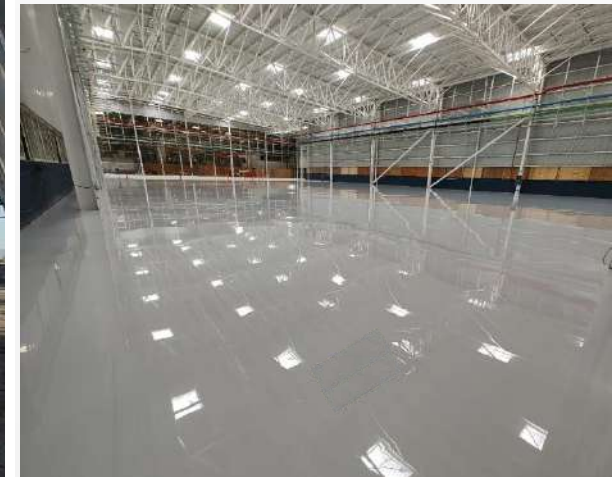
GKN Driveline

Construction of 3 new plants.
22,240 m²

Machinery transportation and
installation from the U.S.A.



- ✓ **VALUE ENGINEERING FOR ALL SPECIALTIES TO AIM BUDGET TARGET**
- ✓ **TURNKEY PROJECT, INCLUDING MACHINERY TRANSPORTATION FROM THE US, INSTALLATION ON SITE**
- ✓ **INTEGRAL EQUIPMENT ALL SPECIALTIES: HVAC, FIRE SYSTEM, ELECTRICAL INSTALLATIONS ETC.**



BRP Training Center

Adaptation and remodeling
of training area

Remodeling 920 m2



- ✓ **DEMOLITION AND FINISHING
DETAILED WORKS**
- ✓ **INTEGRATION OF STRUCTURAL
ELEMENTS IN REMODELATION**
- ✓ **FIRE SYSTEM, COMPRESSED
AIR AND HVAC RELOCATION**



Técnicas Reunidas/ Powertecno

Construction and rehabilitation
of 24 buildings within the CFE
combined cycle plant in Mérida
and Valladolid



- ✓ **CONSTRUCTION AND
INTEGRAL OUTFITTING**
- ✓ **EUROPEAN SUPERVISION,
FIRST LEVEL REQUIREMENTS
AND QUALITY MANAGEMENT
SYSTEM**
- ✓ **DETAILED LEVEL IV
PLANNING**



BCS-AIS REYNOSA

Building adequations and outfitting

New Building expansion in 2022
5,550 m²



- ✓ **CLEAN ROOM WITH ISO 8 CERTIFICATION**
- ✓ **BUILDING ADEQUATIONS**
- ✓ **HVAC, FIRE PROTECTION SISTEM, COMPRESSORS, ELECTRICAL SYSTEM ETC.**



BCS-AIS REYNOSA 24

Warehouse expansion
with several clean rooms
5,550 m²



- ✓ **ISO 8 CLEAN ROOMS**
- ✓ **VACUUM SYSTEM, HVAC, FIRE PROTECTION AND COMPRESSOR SYSTEM**
- ✓ **CIVIL WORKS AND BUILDING ADAPTATIONS**
- ✓ **ESD AND EPOXY TILE**



CENTRO TÉCNICO MX STEERINGMEX – NEXTEER 63

Executive project and execution of
laboratories and corporate offices

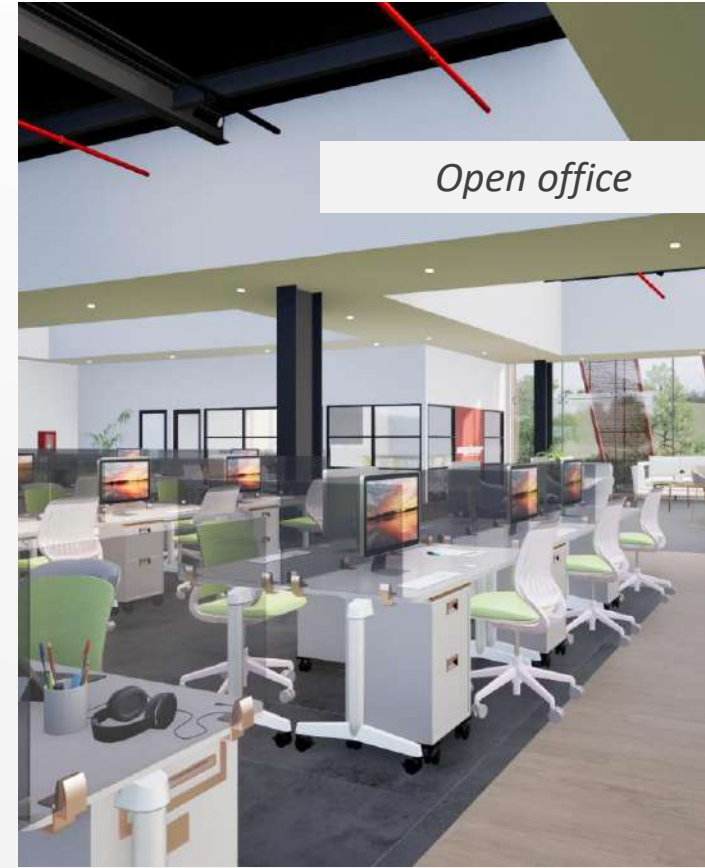
Lab 4,834.65 m²



Renders



- ✓ **INTEGRAL WORK: CIVIL WORKS, SPECIALIZED FLOOR, HVAC, FURNITURE, ELECTRICAL INSTALLATION AND MISCELLANEOUS.**
- ✓ **OPEN OFFICE SPACES, RECEPTION, LABORATORY AND SANITARY MODULES.**
- ✓ **BIM MODELING OF THE ENTIRE PROJECT**



Open office

CENTRO DE MANUFACTURA AVANZADA NEXTEER

Corporate offices and toolshop
1551 m²



✓ **INTEGRAL PROJECT WITH CIVIL
WORKS, SPECIALIZED FLOOR,
HVAC, OFFICE CORPORATIVE
FURNITURE, ELECTRICAL AND
VARIOUS WORKS**

✓ **INTEGRATED WORK WITH
INTERIOR DESIGN OFFICE**



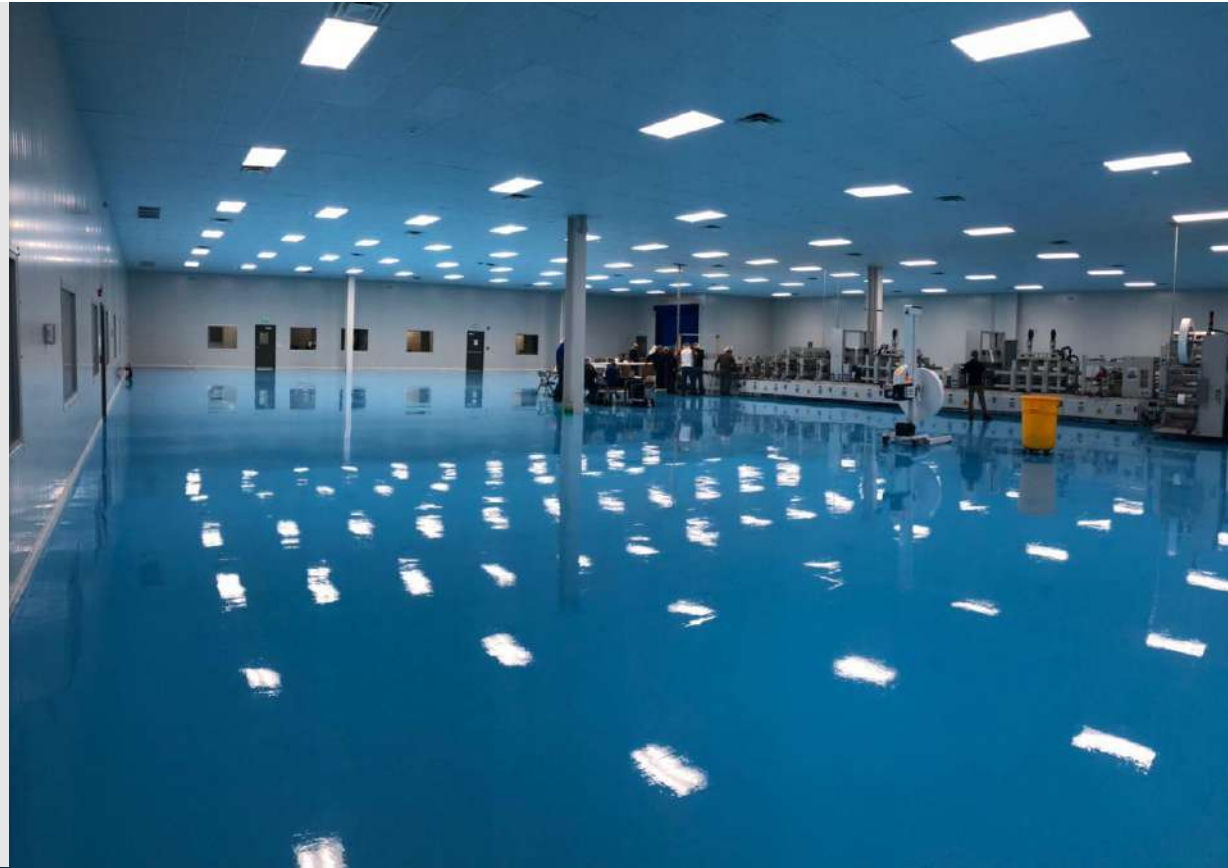
PRINTPACK MEDICAL TIJUANA

Clean Room design and execution

Tijuana, Baja California



- ✓ **DESIGN AND CONSTRUCTION OF CLEAN ROOM CONSIDERING PHARMACEUTICAL NORM**
- ✓ **LOCKER AND DESINFECTION AREA**
- ✓ **PHARMACEUTICAL QUALITY STANDARS FOR DESING AND EXECUTION**



Printpack QRO

Corporate office full remodeling
and construction of new industrial
cafeteria



- ✓ **CIVIL ADEQUATIONS TO
ENABLE AREA**
- ✓ **FINISHES AND OUTFITTING
ALL SPECIALTIES**
- ✓ **DISABLE OLD CAFETERIA AND
CONSTRUCTION AND
EQUIPMENT OF A NEW ONE
WITH ACCESS FROM THE
OUTSIDE**

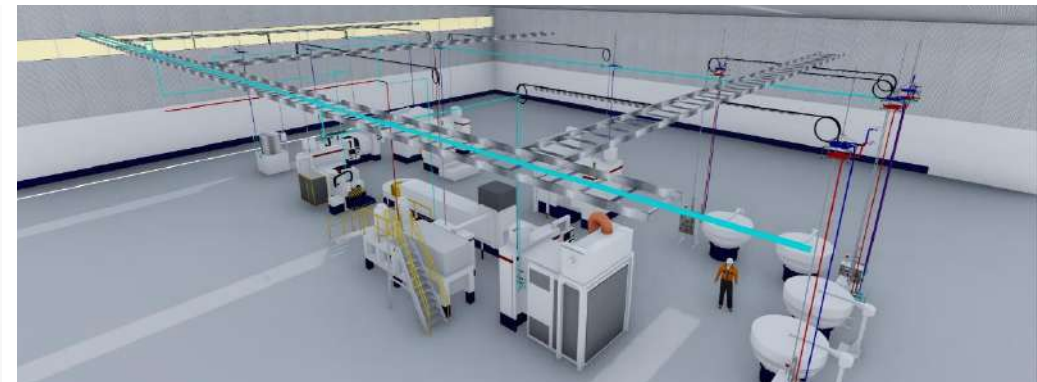


AMERICAN AXLE AND MANUFACTURING

Transfer, leveling and installation of machinery. Services installations electric, pneumatic and hydraulic.



- ✓ **+400 MACHINES RELOCATED.**
- ✓ **DELIVERY OF ENGINEERING PROJECTS AND RENDERS**
- ✓ **LAYOUT AND LEVELING ACCORDING TO LAYOUT**
- ✓ **TRANSPORT, UNLOADING AND INSTALLATION OF MACHINERY**



BOS AUTOMOTIVE EXPANSION

Expansion of industrial building in Guanajuato and adjustments to the building, offices, cafeteria, bathrooms, platform equipment, etc. (9,000 m²)



AUTOLIV QRO

Continuous maintenance and
building adaptation

Installation of electrical services and
machinery movement



- ✓ **CONSTRUCTION OF OFFICES, WAREHOUSE AND DESTRUCTIVE TESTING LABORATORY**
- ✓ **ELECTRICAL INSTALLATIONS, MOVEMENT OF MACHINERY AND EQUIPMENT**
- ✓ **ENGINEERING PROJECTS**
- ✓ **CONNECTION AND ADAPTATION OF HYDRAULIC, PNEUMATIC, ELECTRICAL AND COMPRESSED AIR SERVICES.**



MAGNETI MARELLI TOLUCA

Complete equipment of the
20,000 mts2 building.

Project delivered ready
for 100% production.



- ✓ **INTEGRAL PROJECT WITH CIVIL WORKS, SPECIALIZED FLOOR, HVAC, TRAVEL CRANE AND VARIOUS WORKS.**
- ✓ **TRANSFER OF MACHINERY, FROM TENNESSEE TO TOLUCA, EDO DE MÉXICO.**
- ✓ **MOVEMENT FORM THE US AND INSTALLATION OF MACHINERY.**



MAGNETI MARELLI TEPOZOTLÁN

Building adequations and
complete moving, transfer
and installation of machinery



- ✓ **CIVIL WORK FOR PIT TO FIT MACHINERY/ ELECTROMECHANICAL WORK ADEQUACY.**
- ✓ **DESIGN AND INSTALLATION OF TRAVEL CRANE.**
- ✓ **TRANSFER FROM CD JUÁREZ.**
- ✓ **INSTALLATION OF PRODUCTION LINES.**



ASHCROFT QRO

Empty shell outfitting
Supply of electrical services,
compressed air and high- and
low-pressure nitrogen.



- ✓ **ELECTRICAL INSTALLATIONS
120V, 220V AND 480V.**
- ✓ **BUFFER TANK MANEUVER**
- ✓ **CONNECTION AND
ADAPTATION OF HYDRAULIC,
ELECTRICAL AND COMPRESSED
AIR SERVICES**
- ✓ **ADAPTATION FOR LOUVERS IN
COMPRESSOR ROOM**



We have had great success in existing buildings adjustments without affecting the production of the plant.



Isolated work area



Outside



Inside

U.S.A. coverage
since 2011



ACISSA INC.

Engineering solutions and high quality services.



National and international
relocation and **installation** of
machinery and assembly lines.



Machinery and equipment
decommissioning, packaging
and transportation.



Facilities integral **outfitting**
installation and maintenance.



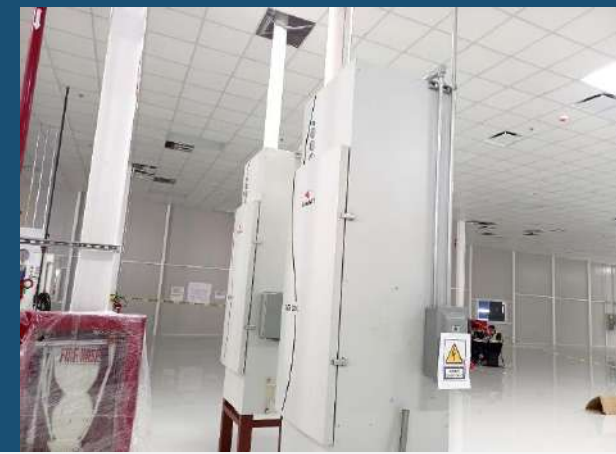
Preparation of electrical,
electronic, hydraulic and
pneumatic services for
reassembly.



ZF Direcciones Rogersville TN

**Disassembly on site,
reinstallation in
Querétaro for Tesla
production line**

Machinery relocation
supervision, transportation
and installation in Parque
FINSA QRO



GKN Driveline Auburn Hills MI

Disassembly, loading transportation and installation in Guanajuato

Machinery relocation
supervision, transportation
and installation from Michigan
to Celaya, Guanajuato.



Magneti Marelli Pulaski

**Tennessee assembly
line relocation to
Coahuila, Mexico**

Disassembly
maneuvers, transfer
and positioning of
industrial equipment.



Magneti Marelli Clarkstone

Michigan assembly line relocation to Toluca, Mexico

Disassembly
maneuvers, transfer
and positioning of
industrial equipment.



nexteer
AUTOMOTIVE

HITACHI

Kellogg's

ZODIAC
AEROSPACE


Unilever

AL AUTOMOTIVE
LIGHTING


TOYOTA

 **elektra**

SMP
Samvardhana Motherson Peguform

 **Printpack**

 AUTOMOTIVE
INTERFACE
SOLUTIONS

 **BorgWarner**


MARELLI

 **emsur**

Piovan
Customers. The core of our innovation

BHTC
COMFORT IN MOTION

 **Gill Industries**


 **MMREIT Property Administration, A.C.**

Hines

SOME OF OUR CUSTOMERS

 **THERMOTECH**
A DIVISION OF PLASMAN GROUP


SAINT-GOBAIN

 **ThyssenKrupp**

 **byva**




GKN Driveline

**MANN+
HUMMEL**



Honeywell


Autoliv


RMSG


METELIX


PARKS


INTERMEX[®]
INDUSTRIAL PARKS




American Industries

TRW
Automotive



¿Why ACISSA?

Project management
as per best practices
related by PMI® and
BIM modeling

Experience with **FM
Global** and **NFPA**
certification projects

Experience in
specialized sectors

Coverage in México
and in U.S.A.

Labs and structural
engineers teams to
back up proposals

+24 years of
experience in
facilities outfitting
and expansions

How can we help?

Contact our team

hola@acissa.com +52 442 359 5430

 ACISSA01

 www.acissa.com

